



HEALTH & WELLBEING BOARD

Subject Heading:

JSNA Annual Report

Board Lead:

Sue Milner, Interim Director of Public Health

Report Author and contact details:

Ade Abitoye, Interim Head of Public Health
Intelligence

The subject matter of this report deals with the following priorities of the Health and Wellbeing Strategy

- ☒ Priority 1: Early help for vulnerable people
- ☒ Priority 2: Improved identification and support for people with dementia
- ☒ Priority 3: Earlier detection of cancer
- ☒ Priority 4: Tackling obesity
- ☒ Priority 5: Better integrated care for the 'frail elderly' population
- ☒ Priority 6: Better integrated care for vulnerable children
- ☒ Priority 7: Reducing avoidable hospital admissions
- ☒ Priority 8: Improve the quality of services to ensure that patient experience and long-term health outcomes are the best they can be

SUMMARY

- Local authorities and clinical commissioning groups have equal and joint duties to prepare Joint Strategic Needs Assessments, through the Health and Wellbeing Board (HWB) in order that the health and social care needs of the population are properly assessed and proper plans and services may be put in place.
- The HWB delegates this function to the Director of Public Health through the Joint Strategic Needs Assessment (JSNA) Steering Group.
- This is the annual report of the JSNA Steering Group to the HWB
- The JSNA work programme is developed by the steering group. A new approach was adopted last year to provide a more streamlined and fit-for-purpose JSNA, which informed the development of a new work programme. The work programme is being delivered and is on track.
- The JSNA now consists of a suite of inter-related web-based products which, taken together, provide an overview of health and social care needs of the borough and one or two carefully chosen 'deep dives' per year.

Health and Wellbeing Board

- Key JSNA resources and products have been published in the last year and more are about to be published.

RECOMMENDATIONS

The Board is asked to:

- Consider this report, the JSNA programme and the progress made
- Suggest any necessary amendments and additions

REPORT DETAIL

Background

In 2015, there was a review of the JSNA work programme and approach. This led the JSNA steering group to make the following key changes:

- The Director of Public Health assumed the chair of the steering group.
- Membership of the group was reviewed and expanded to make it more representative of partners in the local health and wellbeing economy.
- Terms of reference of the group were refreshed.
- A more streamlined work programme was established.

The JSNA Work Programme

The new JSNA approach focused on the production of a number of overarching resources plus undertaking one or two carefully chosen 'deep dives' per year.

The JSNA work programme in the last year (2015/16 till date) is as follows:

- This is Havering – a demographic and socioeconomic profile
- Overview of Health and Social Care Needs
- Interactive Ward Health Profiles
- Obesity Needs Assessment – *agreed deep dive for 2015/16*
- Special Educational Needs and Disability (SEND) Needs Assessment – *agreed deep dive for 2016/17*
- Diabetes – *agreed potential deep dive for 2016/17*
- Accountable Care Organisation (ACO) Population Health Workstream
- Public Health Outcomes Framework (PHOF) Report and list of (and links to) publicly available profiles/resources

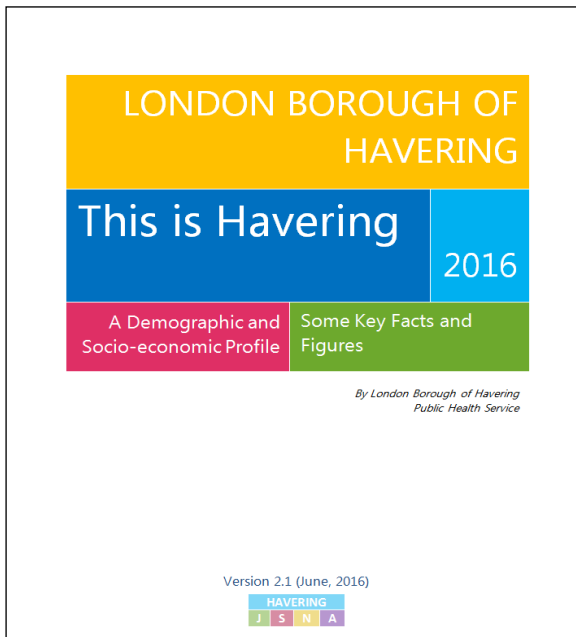
Published JSNA resources and products are available at:

<http://www.haveringdata.net/jsna/>

This report summarises key features of the work programme.

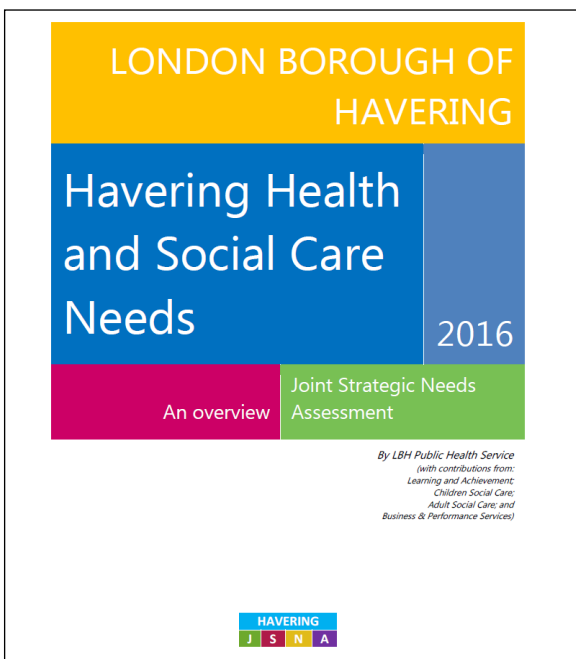
Health and Wellbeing Board

This is Havering – a demographic and socioeconomic profile



- Published originally in September 2015 and updated every quarter.
- Current version was published in June 2016 and the next is due at the end of September.
- It has been adopted as the “one version of the truth” in relation to the *demographic and socioeconomic profile of Havering*
- The product is available in 3 different formats:
 - Main document (front page pictured on the left)
 - PowerPoint Presentation
 - Infographic summary (see attachment a)

Overview of Health and Social Care Needs

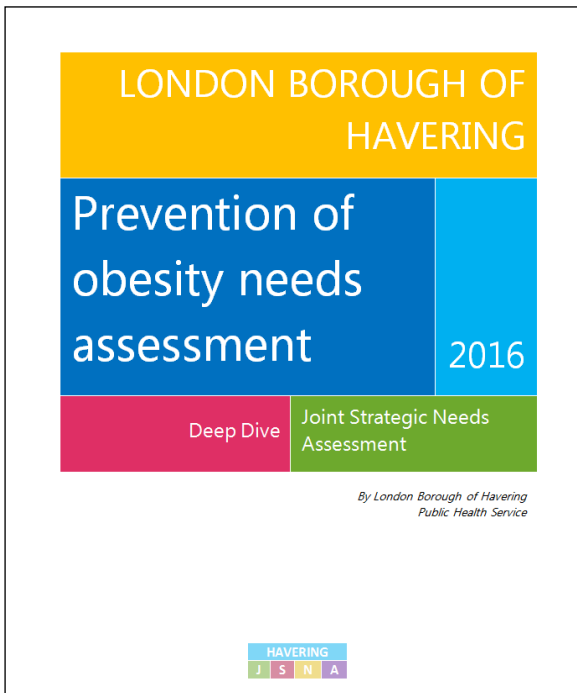


- Published in February 2016 (front page pictured on the left).
- It is updated and improved annually – the next update is due by the end of March 2017.
- The resource provides a summary of Havering’s health and social care needs. It describes the pattern of risk factors for ill health, the status of health and wellbeing and how people use local services.

Interactive Ward Health Profiles

- The aim is to provide an informative and interactive insight of ward health and wellbeing issues in Havering
- Councillors were engaged in helping to shape it (see attachment b for presentation provided to councillors who attended the first of three sessions for Members)
- The product is being finalised and should be published by the end of July.
- It will be demonstrated very briefly during the Board meeting.

Obesity Needs Assessment



- Published on the JSNA website in July 2016 (front page pictured on the left).
- It was the agreed 'deep dive' for 2015/16 – more than 100 pages long.
- The Executive Summary of this needs assessment has previously been taken to the Board (as part of a report on the Obesity Strategy).
- It underpins the Obesity Strategy.
- It will underpin the upcoming Annual Director of Public Health Report.

Special Educational Needs and Disability (SEND) Needs Assessment

- Agreed 'deep dive' for 2016/17
- Impending OFSTED visit partly informed its choice.
- Currently underway – a first 'complete' draft (currently more than 100 pages long) almost ready.
- It may be brought to the Board for consideration when completed.

Diabetes Needs Assessment

- Potential second deep dive for 2016/17, which may be done for the tri-borough, i.e. Barking & Dagenham, Havering and Redbridge (BHR), subject to agreement.
- The Havering CCG initially put this forward but it has also been recognised as a priority area across the 3 boroughs based on work done as part of the Accountable Care Organisation (ACO) Population Health workstream.
- Currently on hold. Some discussions and agreements are required before work on this can begin. Work unlikely to start this summer.

ACO (Accountable Care Organisation) Population Health workstream

- On-going support work, as/when required, for the ACO Business Case (Population Health Workstream).
- An example of what has been done under this workstream is a RIGHT care review. Its aim was to identify priority health programmes which offer the best opportunities for improving healthcare for populations, the value that patients receive from their healthcare and the value that populations receive

Health and Wellbeing Board

from investment in their local health system. This was undertaken on a BHR footprint. (see attachment c).

Public Health Outcomes Framework

- A Public Health Outcomes Framework (PHOF) Report has been produced (see attachment d).
- The report is a summary for Havering, which will be updated annually.
- In addition, a list of (and links to) publicly available profiles/resources has been compiled.
- Both to be published to the JSNA website by the end of July 2016.

BACKGROUND PAPERS

The following documents are attached to this report:

- a. Infographic summary of “This is Havering – a demographic and socioeconomic profile”
- b. Presentation to councillors on Ward Health Profile
- c. Right Care Priority Areas Report
- d. PHOF Annual Report